

# Quick Operating Instructions

## Turner Quantech Fluorometer

### 1. Unit Power-Up

- Login on computer in service corridor.
- After initiation of the menu, press ENTER to continue operation of the fluorometer.
- The display reads, “Unit Initializing, Auto-Calibrating (Please “Unit Initializing, “15 Minutes Remain.”
- The unit will perform a 15 minute warmup countdown to ensure the stability the fluorometer electronics. A timer on the display show the time remaining before warm-up period is complete.
- After the unit is warmed-up, the display will be at the “Main Menu”. Now you can perform “Advanced Functions” (only for UV excitation) or choose a preprogramed method or create a new program.

### 3. Navigating the menu and selecting programs/methods

- See “Using the menu system - Basics” for instructions on how to use menu system

### 4. Running standard or pre-programed methods

- See “Using the menu system - New and programed methods” for instructions on how to setup sample runs.

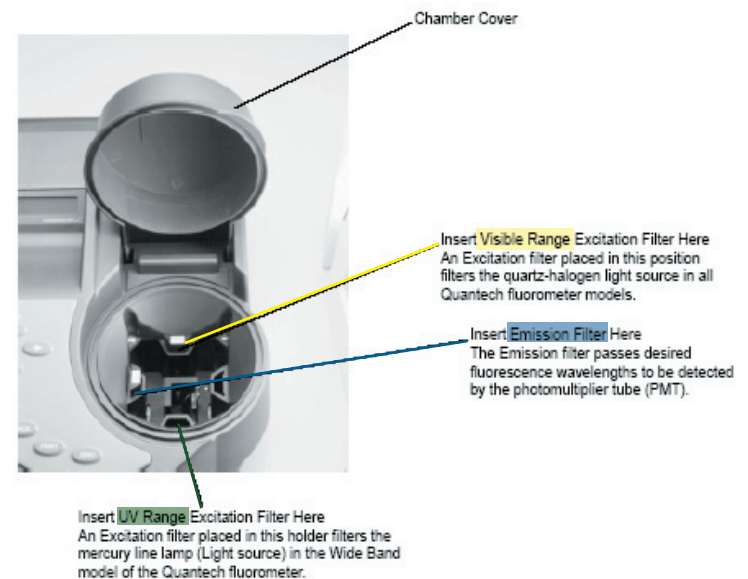
*Note: For most applications, plastic disposable cuvettes (10 x 10 x 45 mm) that has four clear sides are good. Be sure that the sides are optically clear and free of thumbprints, dirt, etc. If smaller sample size cuvettes are needed, notify staff*

### 5. Unit Power-Down

- Upon completing all fluorescence analyses with the Turner Quantech Digital Filter Fluorometer, power down the unit by pressing the MENU key to return to the “Main Menu.”
- Logout on computer in service corridor

### 2. Changing filters

- Carefully remove filter you want to replace from it’s holder in the fluorometer. Do not touch the filter window with anything!
- Put the filter inside the small zip lock bag in the appropriate box
- Carefully take the filter you want from its storage box and leave the ziplock bag in the box
- Insert the filter in the appropriate slot in the fluorometer (see image)



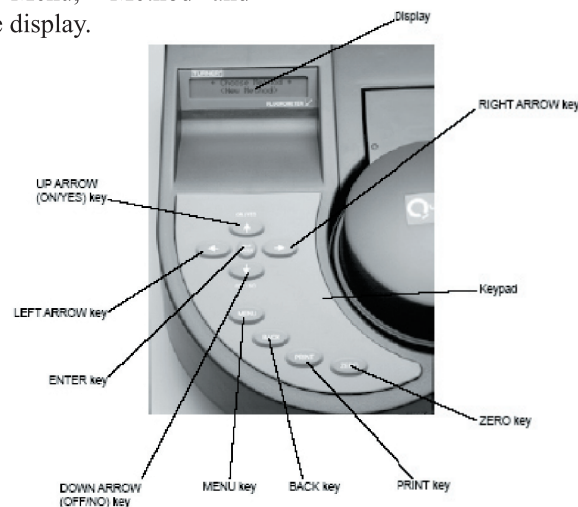
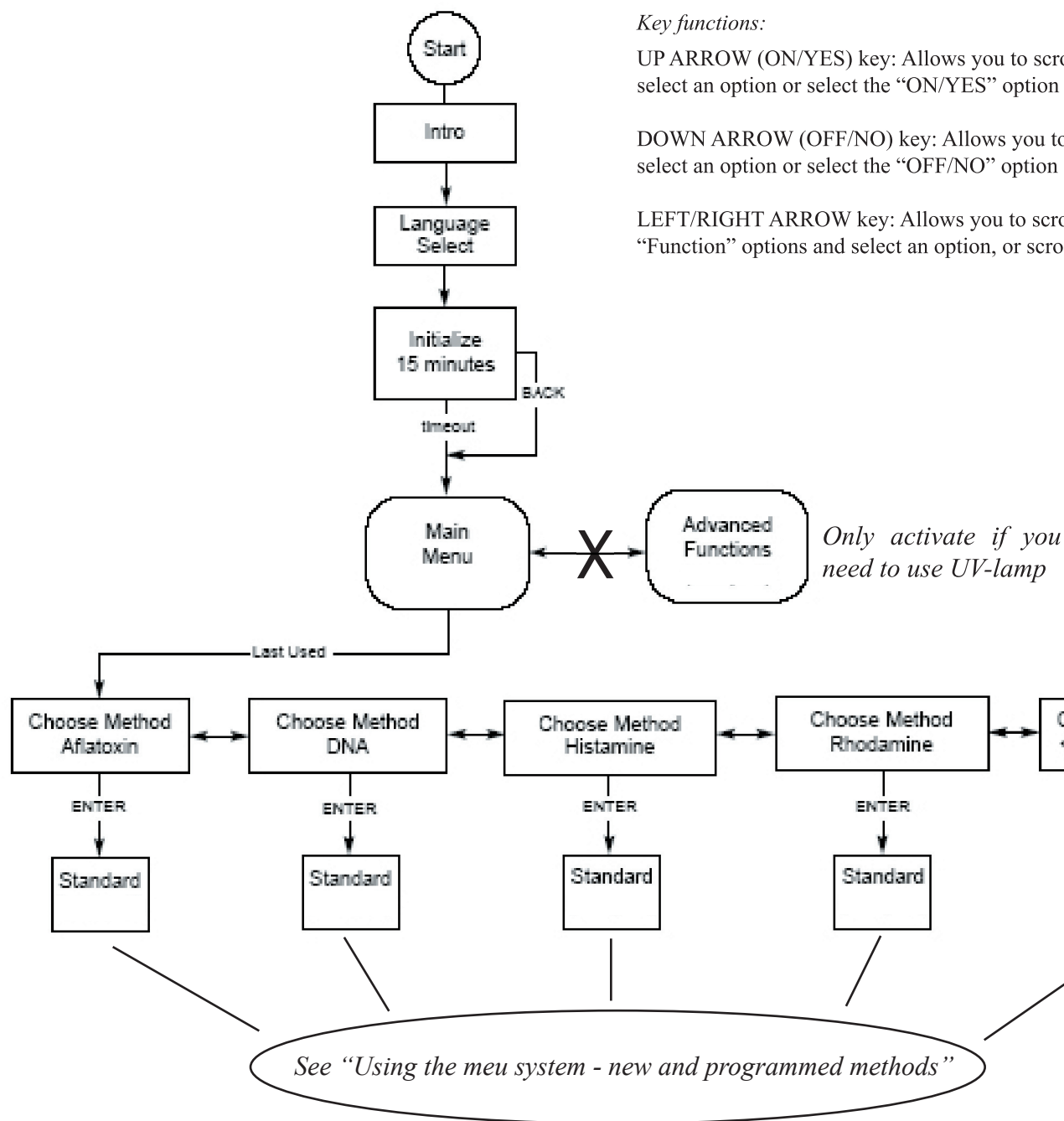
# Using the Meny System - Basics

## Key functions:

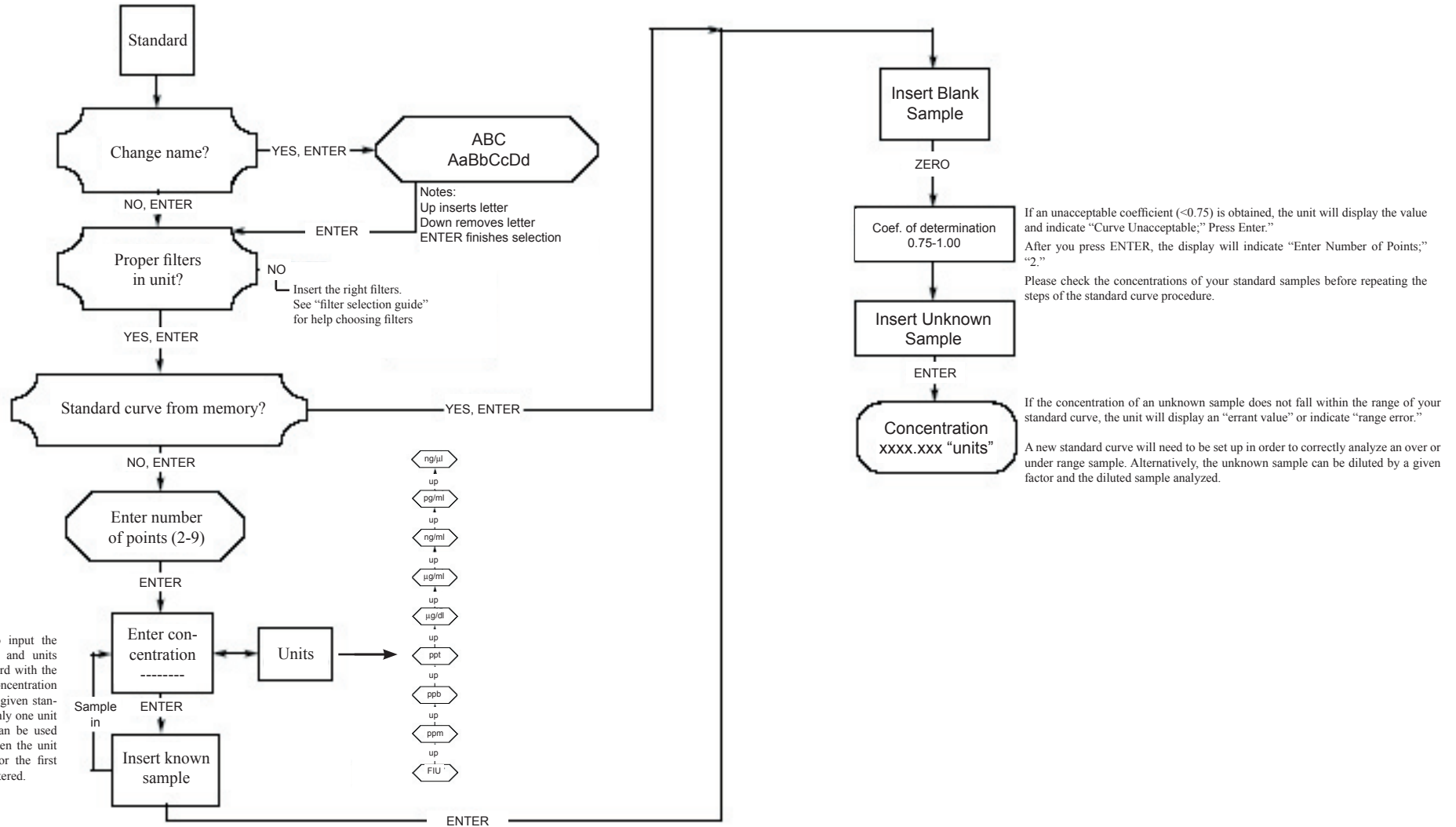
UP ARROW (ON/YES) key: Allows you to scroll through “Method” parameters in an *incremental* manner and select an option or select the “ON/YES” option in response to a question posed by the fluorometer software.

DOWN ARROW (OFF/NO) key: Allows you to scroll through “Method” parameters in *descending* order and select an option or select the “OFF/NO” option in response to a question posed by the fluorometer software.

LEFT/RIGHT ARROW key: Allows you to scroll between “Menu,” “Method” and “Function” options and select an option, or scroll across the display.



# Using the Meny System - New and Programed Methods



Note  
 Remember to input the correct value and units for the standard with the maximum concentration first. For any given standard curve, only one unit of measure can be used and is set when the unit of measure for the first standard is entered.

Note  
 When inserting the first known sample, use the maximum concentration that is going to be measured, the remaining known samples can be inserted in any order to complete the standard curve for your method. It is recommended to insert known samples in decreasing order of concentration.

# Using the Meny System - Raw Fluorescence

